

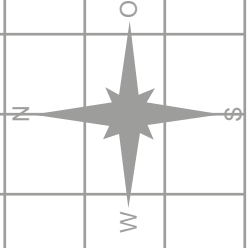
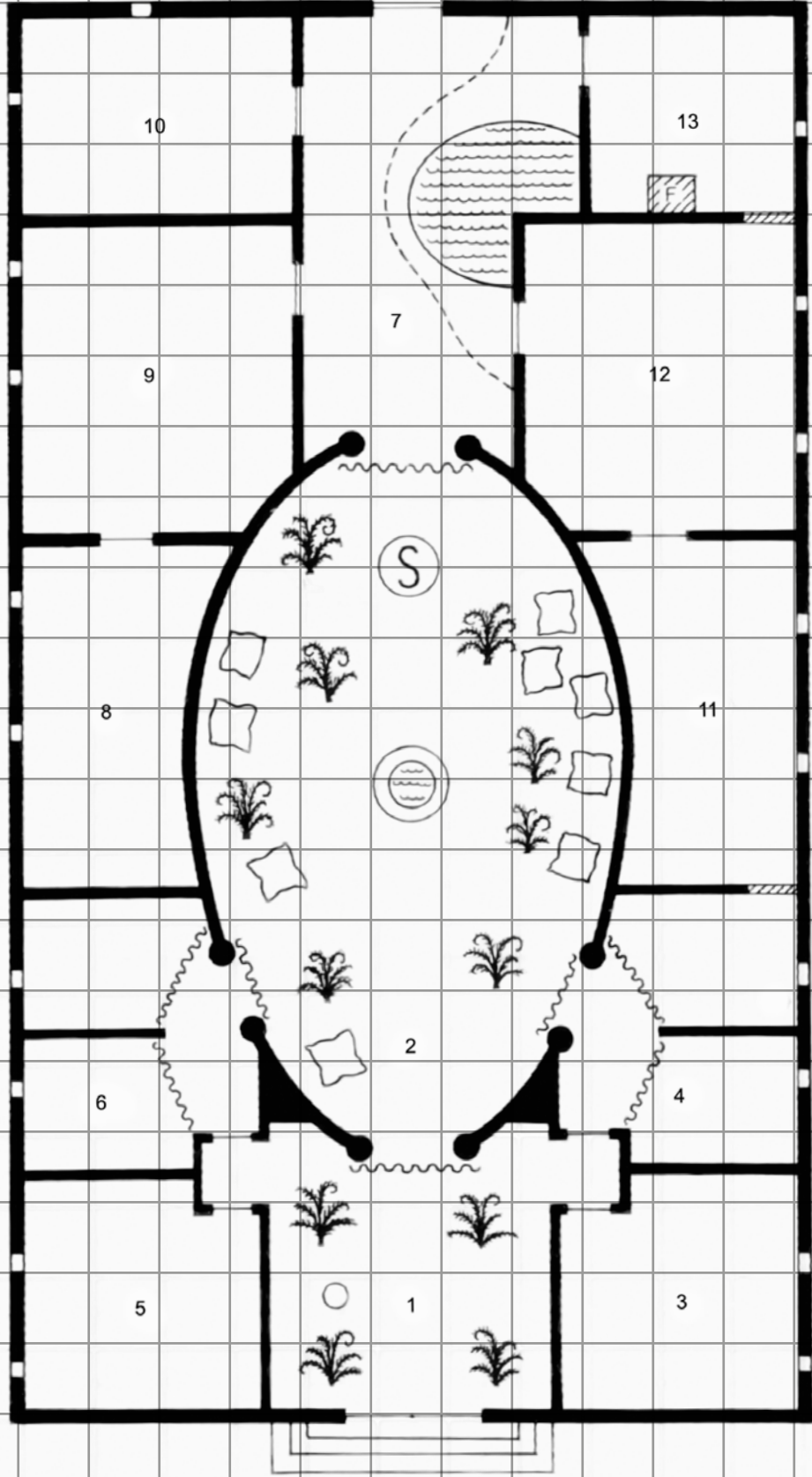
# Der Plan des Schicksals

(zum Herausnehmen)

1 2 3 4 5 6 7 8 9 10 11 12 13 14 15 16 17 18 19 20 21 22 23 24 25 26

A B C D E F G H I J K L M N O P Q R

Der Tempel der Rahja

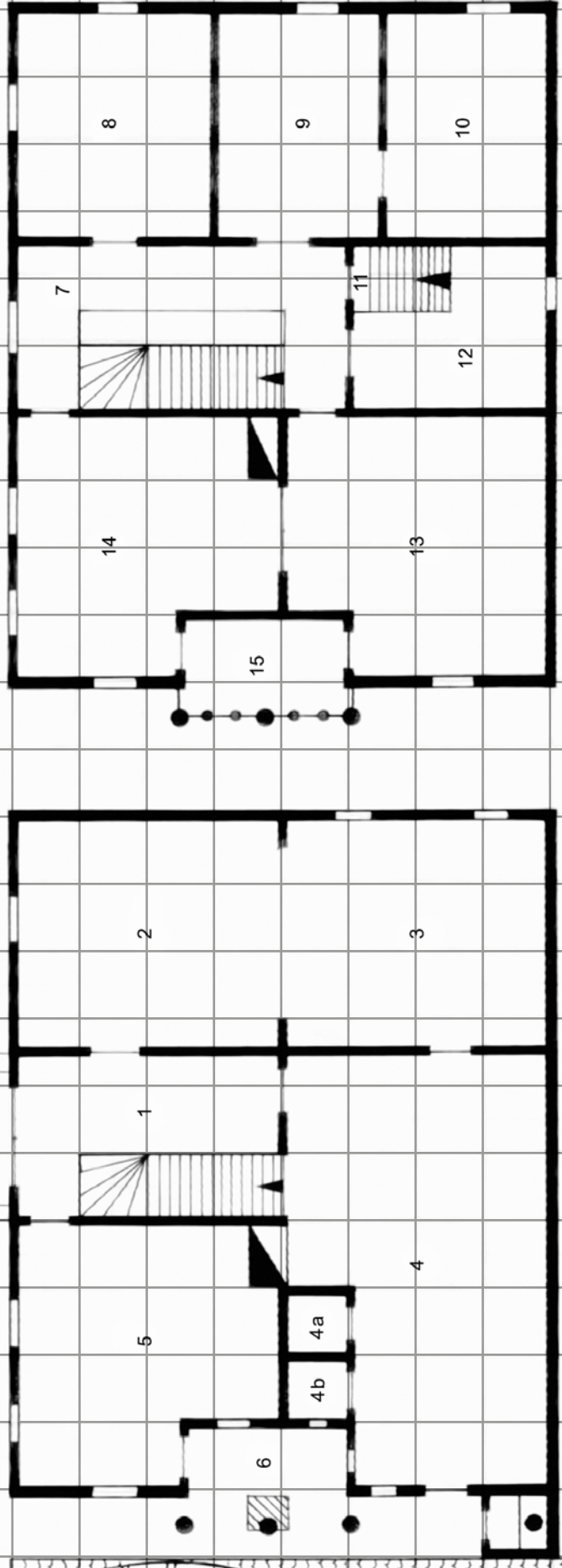


1m

1 2 3 4 5 6 7 8 9 10 11 12 13 14 15 16 17 18 19 20 21 22 23 24 25 26

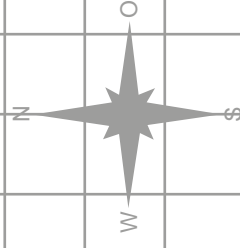
A B C D E F G H I J K L M N O P Q R

Das Haus am Seebogen



Obergeschoß

Erdgeschoß



1m



